

# UCCE Pollinator Workshop



**Tuesday, February 21, 2012**

**9:00-11:00am**

Norton Hall

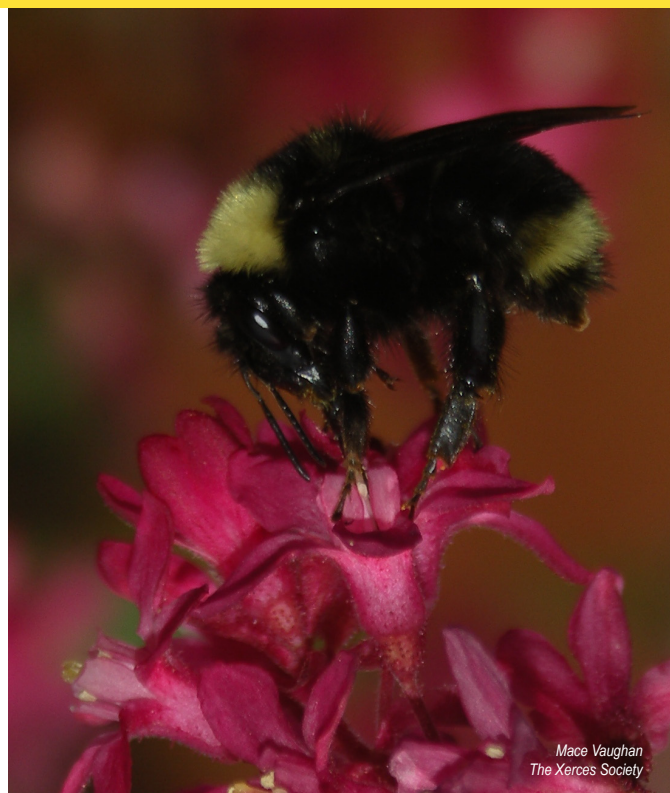
70 Cottonwood St.

Woodland, CA

TOPICS WILL INCLUDE:

- Multiple stresses on honey bees
- Sustainable pollination strategies for specialty crops
- Native pollinators and squash and pumpkin pollination
- Insecticides, honeybees, and hybrid onion seed production
- Creating habitat for pollinators

For more information contact [Katie Churchill](mailto:kmchurchill@ucdavis.edu) at UC Cooperative Extension in Woodland at [kmchurchill@ucdavis.edu](mailto:kmchurchill@ucdavis.edu), or (530) 666-8143



Mace Vaughan  
The Xerces Society

## WORKSHOP AGENDA

9:00-9:10am	Introductions and Updates: Rachael Long, Farm Advisor, UCCE Yolo County
9:10 – 9:35am	Multiple Stresses are Hard on Honey Bees: Dr. Eric Mussen, CE Apiculturist, UC Davis, Entomology
9:35 – 10:00am	Sustainable Pollination Strategies for Specialty Crops: Prof. Neal Williams, UC Davis, Entomology.
10:00 – 10:20am	Native Pollinators and Squash and Pumpkin Pollination: Katharina Ullmann, graduate student, UC Davis, Entomology.
10:20 – 10:40am	Insecticides Reduce Honeybee Visitation and Pollen Germination in Hybrid Onion Seed Production: Dr. Sandra Gillespie, Post-doc, UC Davis, Entomology.
10:40– 11:00am	Creating Habitat for Pollinators: Jessa Guisse, Pollinator Habitat Restoration Specialist, The Xerces Society, Sacramento, CA.



Jessa Guisse  
The Xerces Society



Mace Vaughan  
The Xerces Society



Jessa Guisse  
The Xerces Society



Mace Vaughan  
The Xerces Society